

# MANUAL GUIDE

**PIXPINE.COM**

## HOW TO CHANGE SHIRT AND BACKGROUND COLOR



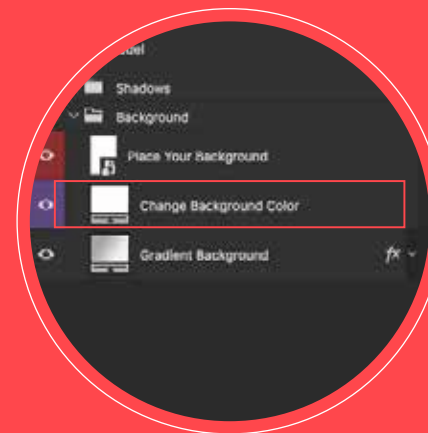
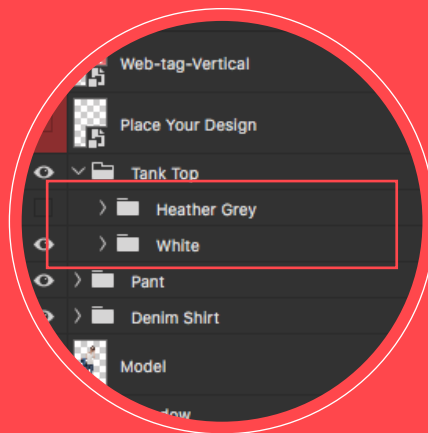
Choose White or Heather grey



Double click on color box  
and change color



Double click on color box  
and change background color



## HOW TO PLACE YOUR OWN DESIGN



Open Smart Object layer  
"Place Your Design"



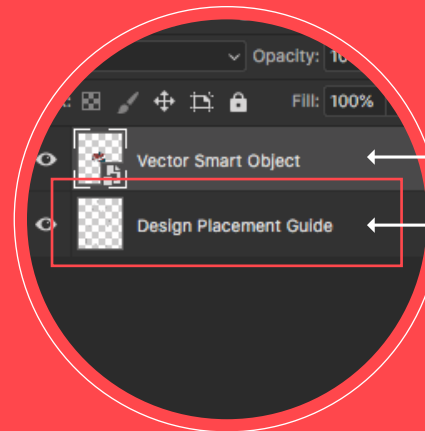
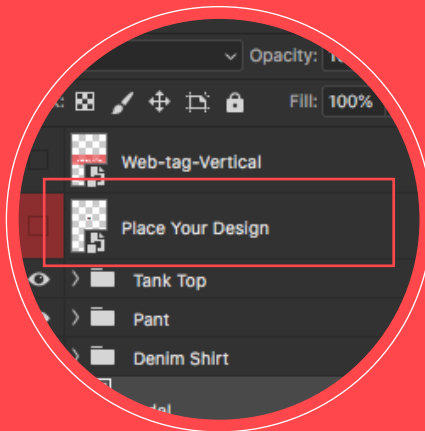
A new window will pop up. Turn on "Design Placement Guide" layer, place your design, turn off "Design Placement Guide" layer hit save and close



All changes will apply instantly  
to your file



For best final  
result use  
graphic files  
(your artwork) on  
transparent  
background



Place your design  
here

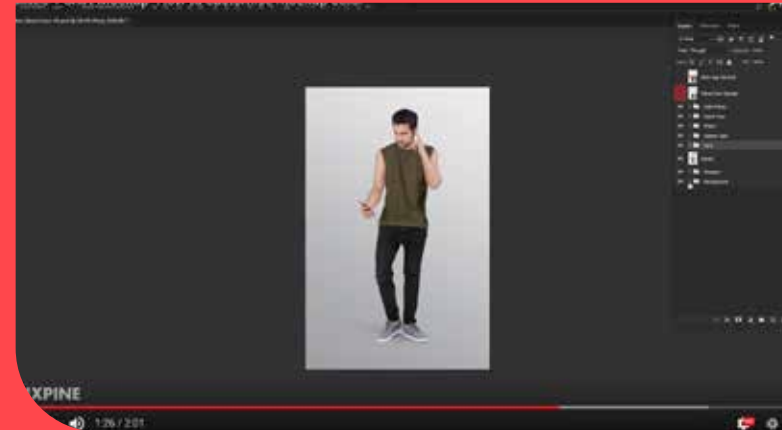
Turn on/off this layer  
to guide you to place  
your design properly

## YOUTUBE VIDEO TUTORIALS

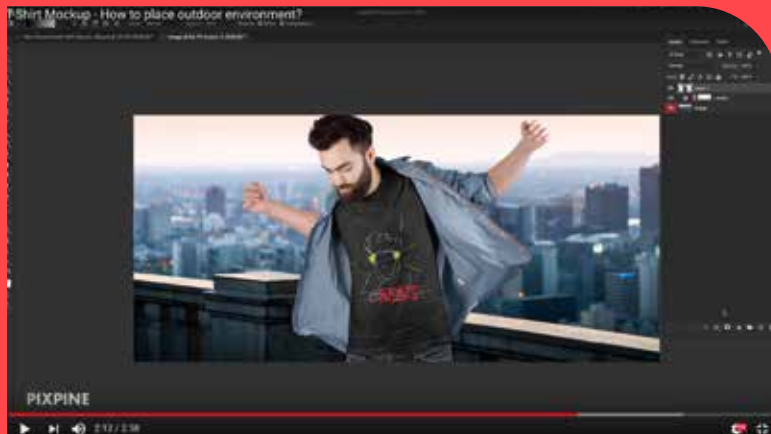
CLICK ON IMAGES DESCRIPTOR TO WATCH VIDEOS



How to place your own design?



How to customise color?



How to place your own outdoor envouriment?



Useful tips

# PIXPINE

**WE ARE JUST A CLICK AWAY.**

If you are facing problem with purchased items or need any support just write an email to [support@pixpine.com](mailto:support@pixpine.com). We will reach you as early as possible.

**FOLLOW US**

Get instant updates on upcoming offers, freebies and best deals.

